

Compatibility Chart

Zenium Dual Mobility Cup	Poly Insert	Femoral Head	
		22 mm	28 mm
44	44/22-46/22	Yes	-
46			
48	48/28-50/28	-	Yes
50			
52	52/28-54/28	-	Yes
54			
56	56/28-58/28	-	Yes
58			
60	60/28-62/28	-	Yes
62			

**Reg. Office :** 102,103, Leena Hights,  
Opp Thunga Hospital, Mira-Bhyander  
Road, Mira Road (East),  
Mumbai - 401107, India.

**Works :** Zenium House, Satya Sai Industrial  
Esate, Fatak Road, Bhayander (East),  
Mumbai-401105, Maharashtra, India

☎ : +91- 6913-900900  
☎ : +91 9323456101  
✉ : sales@komalhealthcare.com  
🌐 : komalhealthcare.com

ZENIUM<sup>®</sup>

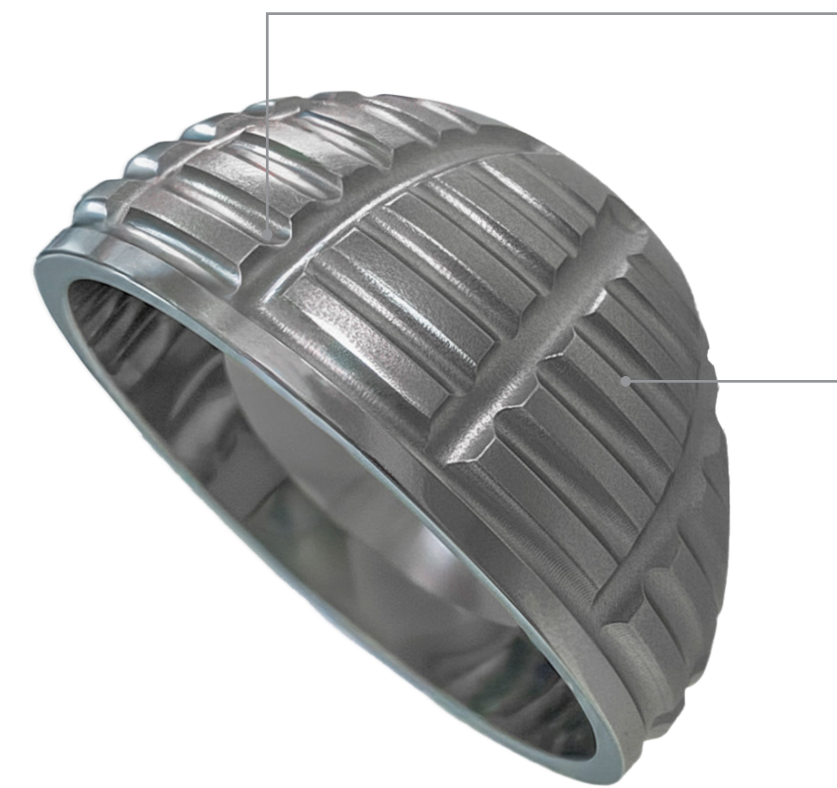


MOBILITY CUP



## DUAL MOBILITY CUP (CEMENTED)

**ZENIUM®**

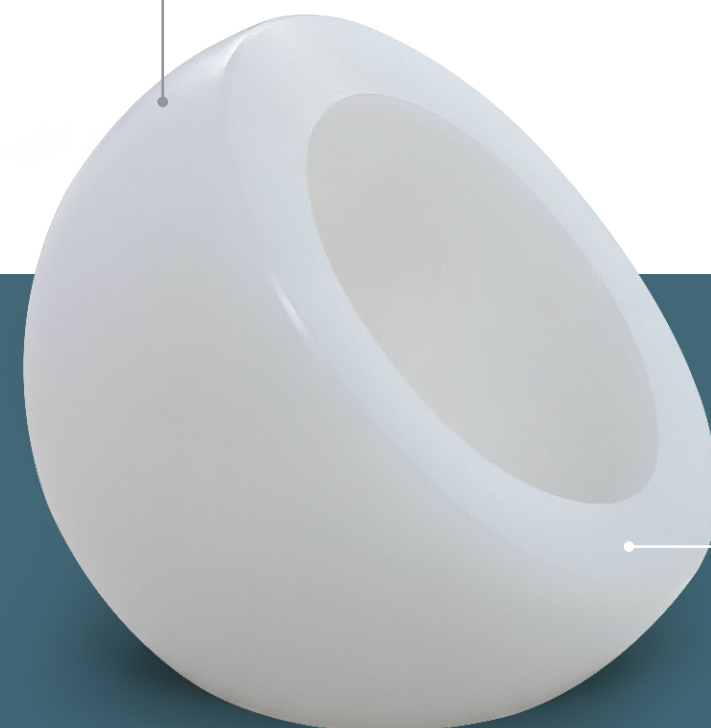


Groove helps to Evacuation of excess cement and promote stability

### Material :

Stainless Steel 316L  
Stainless Steel 316 LVM

## DUAL MOBILITY LINER



### Chamfer Edge

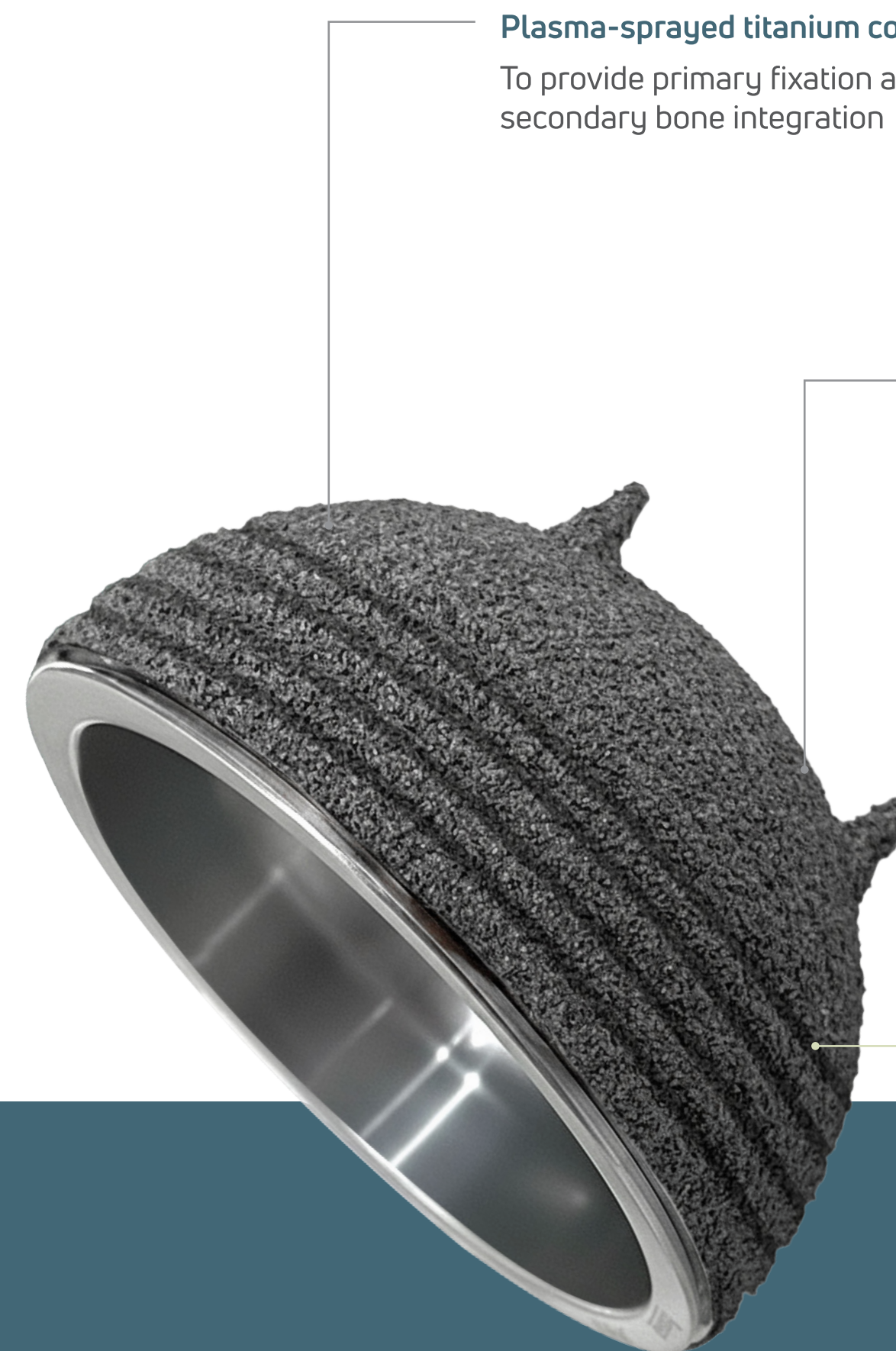
Provides high ROM  
Avoids stress between the poly insert and stem at high ROM

### Material : UHMWPE

Minimize wear and increase longevity

## DUAL MOBILITY CUP (UNCEMENTED)

**ZENIUM®**



### Plasma-sprayed titanium coating

To provide primary fixation and secondary bone integration

### 4 Pegs

For better fixation and rotational stability

### 4 rows of serrations

Provide peripheral fixation